



# PACIFIC TANK LINES



## February

### Happy Birthday

- Greg Batten - 2
- Robert Reynolds - 3
- Tony Carcamo - 8
- Ronnie Cepeda - 10
- David Uiagalelei - 14
- Richard Lynam - 16
- Jerry Partlow - 18
- Walter Phillips - 18
- Timothy Hudson - 22
- Armando Sanchez - 25
- Mitch Summers - 26
- Faith Sherman - 29

### Happy Anniver-

- Jose Pedroza - 2 yr.
- Fredy Zea - 1 yr.

### Welcome New Drivers

- Jack Stearns - SD
- Richard Valenzuela - LV
- Michael Dewitt - LB
- John Price - LB
- Joseph Sloan - LB
- Joe Hernandez - LB



The company has experienced an extreme growth rate over the past several months. We have hired many new office personnel and drivers as well as taking on new business to ensure the growth of Pacific Tank Lines. We have opened a new facility in Las Vegas . With the addition of this facility, Pacific Tank Lines now operates out of 6 locations throughout Southern California and Nevada.

Colton, CA., Van Nuys, CA., Los Angeles, CA.,  
Huntington Beach, CA., San Diego, CA., Las Vegas, NV.



With the new growth, we would like all employees to have the proper contact information to ensure their needs and concerns are met. Listed are the individuals that can be contacted if the need should ever arise.

The following individuals can be contacted at our Riverside Corporate office at (951) 680-1900.

- Terri Dewey - Rack certifications and driver qualifications
- Faith Sherman - Logs
- Mary Reyes - Payroll
- Ken Anderson - Training issues and classes
- Stephanie Totten - Benefits/Workers Comp
- Jennifer Paschall - Billing and profit per hour



The following individuals can be contacted at our Colton location at (909) 421-0775 in the event there is a question regarding scheduling or truck maintenance.

- Angie Duran - Dispatch Manager
- Carl Harris - Operations Manager

Carl Harris  
Operations Manager

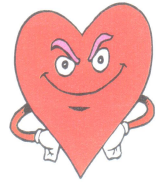
## NEWS FLASH- Catch-Up Contributions

Employees who are age 50 or older may make "catch-up" contributions to 401(k) plans. These contributions are in excess of the standard annual deferral limit. In the year 2005, the catch-up amount is \$4,000. To be eligible for the contribution, the employee must be expected to reach age 50 in 2005 and also meet certain requirements. Call Paychex today at: 1-800-472-0072 Option 20, and find out how!



## SAFETY TIP OF THE MONTH— FOG

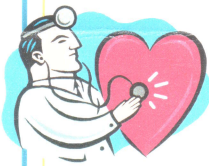
When it comes to inclement weather, fog is one of the most visually limiting conditions. If you get caught in heavy fog, the best thing to do in to stop well off the road until visibility is better. If there is no safe place to stop:



- Take all fog related warning signs seriously
- Slow down. Fog makes it very difficult to judge speed. Do not believe your eyes—glance at your speedometer to make sure you have slowed down.
- Turn on wipers, defroster and low-beam headlights. Using high beams can actually decrease your visibility.
- Moisture from fog can make roads slick, so brake smoothly.
- Crack your window and turn off the radio. Watch for slower moving cars and listen for engine sounds or cars horns.
- If the fog is too dense to continue, pull completely off the road and try to position your vehicle in a protected area from other traffic. Turn on emergency flashers.

This month's weather has been very challenging. Please be careful while driving and remember to do your 5 keys to safe cushion driving.

Ken Anderson  
Training Manager



## Medical, Dental and Vision - Frequently Asked Questions

Q. Can I change my Health Care Plan or benefit plan?

A. Yes, but only during the annual Open Enrollment period or when the employee moves to an area where there are no medical providers under their current Health Care Plan. Pacific Tank Lines Open Enrollment period is during the month of November.

Q. Can I change my Primary Care Physician?

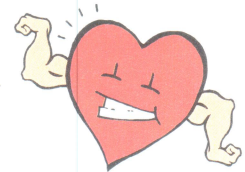
A. Yes, contact Stephanie Totten in the Human Resources Department - (951) 680-1900 Ext. 406

Q. What if I receive a bill?

A. Although you should not receive bills for medical care provided or approved by your Primary Care Physician, you may receive a bill in error. Contact your Health Plan's Member Services Department for assistance. This phone number is located on your ID card.

## ARE YOU IN THE BONUS CLUB??!

These drivers have received or will be receiving BONUS checks for bringing in new drivers for the company. We need drivers in Long Beach, Van Nuys, and Colton. All you have to do is ask... they just might say YES and YOU will receive a check for \$100. Just tell them to call Kathy and I will take over from there. Can't get any easier!



Fredy Zea - 3	Connie Ritslich - 1	Dave Uiagalelei - 1	Angel Moreno - 1
Ric Esquer - 3	Rudy Meave - 1	Gerald Jackson - 1	Floyd Hall - 3 1/2
Georgui Makedonsky - 1	Angelica Duran - 1	Joselito Isidro - 1	Jerry Guerra - 1/2
Glen Edwards - 2	Larry Green - 1	Gerald Ortiz - 1	Mario Ortiz - 1
Tony Carcamo-1	Jose Pedroza - 1	Gene Reed - 1	



## The Trainer's Corner

*Gene Reed—Long Beach Trainer*

•Know your freeways - which lane do you need to be in? Be in the proper lane well ahead of time, so you don't have to squeeze in at the last minute.

•Drive with the headlights on during the day. Make yourself very visible.

•Before backing up put your 4 way flashers on and get out and check even if you think you know what's in back.



## February Safety Meetings:



Place	Day	Dates	Time
San Diego	Thursday	Feb. 3	3 pm
Colton	Tuesday	Feb. 8	3 pm
Colton	Thursday	Feb. 10	3 pm
Van Nuys	Tuesday	Feb. 15	3 pm
Long Beach	Thursday	Feb. 17	3 pm
Huntington Bch	Tuesday	Feb. 22	3 pm
Las Vegas	Thursday	Feb. 24	3 pm